

Premium PrivacyView™ Black Privacy Filter

Side Slide Mount Tab Instruction

- Instrucción de lengüeta de montaje lateral deslizante
- Languette de montage à glissière latérale
- Istruzioni sulla linguetta per montaggio a scorrimento laterale
- Anleitung zum Befestigen der Seitenhalterung
- Zijkastmontagetab Instructie
- Instrução de guia de montagem lateral
- サイドスライドマウントタブの指示
- 側滑安裝選項卡說明
- 측면 슬라이드 마운트 탭 명령

Congratulations!

On your new Premium PrivacyView™ Black Privacy Filter.

Instruction Guide

Side Slide Mount :

Slide mount tabs attach onto the device bezel bordering your display and stays in place, allowing you to slide the filter on and off the screen as needed. for easy filter removal, cleaning and reattachment.

To Apply:

1. Remove film protection.
2. Chose the side between Glossy and Matte.
3. Clean the screen with microfiber cloth.
4. Separate slide mount tabs.
5. Peel off liner to reveal the adhesive.
6. Attach adhesive tabs to four corners of your screen.
7. Slide filter into place.

Note:

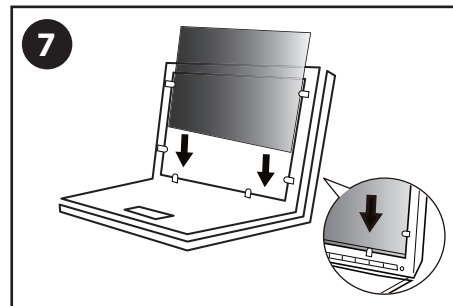
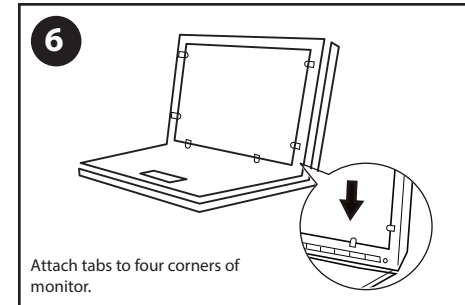
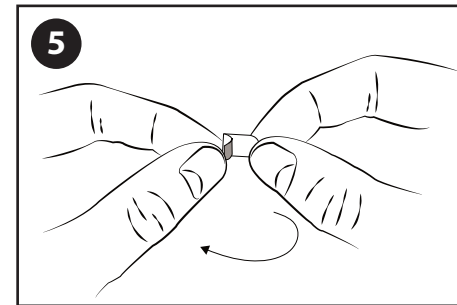
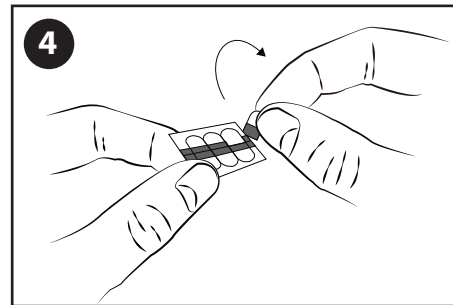
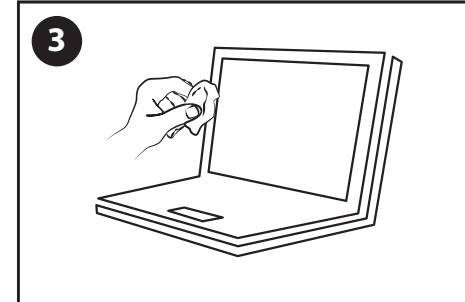
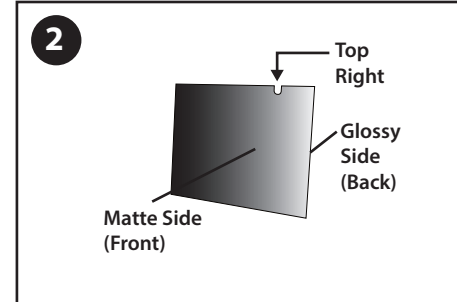
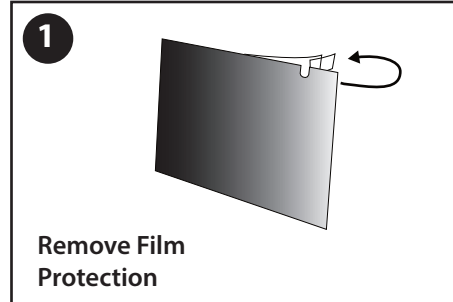
Place additional tabs on the device bezel above the filter to lock it into place.

To Remove:

For permanent removal or to replace slide mount tabs, grab onto the non-adhesive tab and slowly peel.

To Clean & Maintain

Remove the filter from the device before cleaning and moisten a soft, lint-free cloth with ammonia-free glass cleaner to wipe away fingerprints, smudges and dust.



Limited Two Year Warranty

Rocstor warrants this product against defects in Material and workmanship for Two year. Rocstor will supply, at its option, comparable new and rebuilt replacements for defective parts and will pay the labor charges to repair the product found to be defective. The dated bill of sale as evidence of the original purchase price along with the defective product is required.





Premium PrivacyView™ Black Privacy Filter

Congratulations!

On your new Premium PrivacyView™ Black Privacy Filter.

Instruction Guide

Reusable Attachment Strips :

Ideal for displays with edge-to-edge glass, optically clear attachment strips are applied directly onto the filter before attaching to the device screen.

Washable and removable attachment strips allow for easy filter removal, cleaning and reattachment.

To Apply:

1. Remove film protection.
2. Choose the side between Glossy and Matte.
3. Clean the screen with microfiber cloth.
4. Peel off strip from the clear backing.
5. Apply strip close to the edges on the back of the filter.
6. Attach and run your finger across strip to remove bubbles and adhere to the filter.
7. Apply all required strips before peeling off blue liners. Avoid touching the adhesive as you align the filter to attach to the screen.

To Remove:

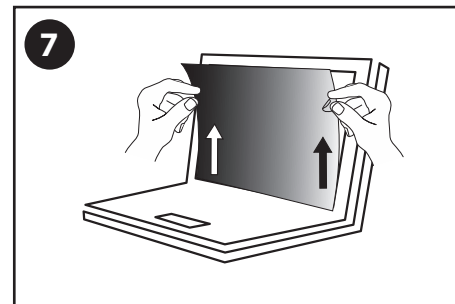
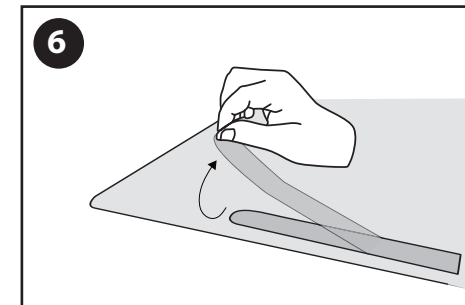
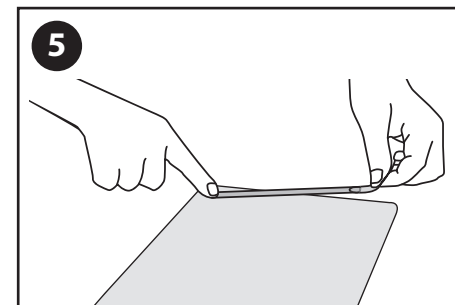
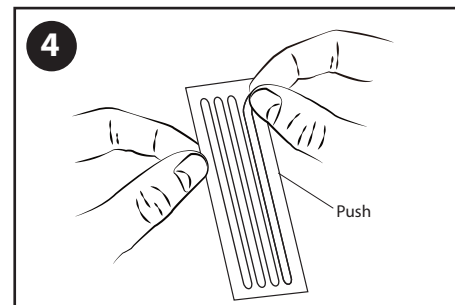
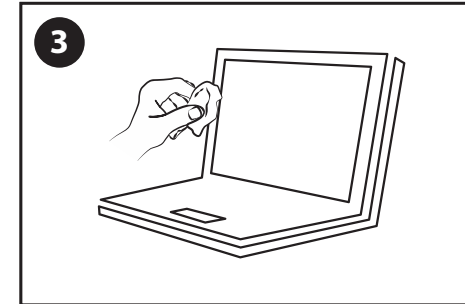
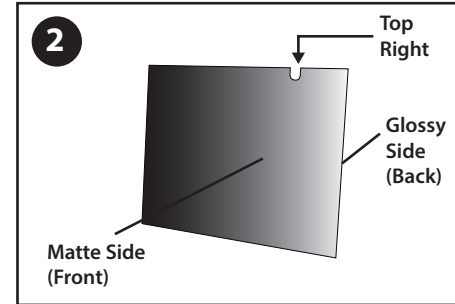
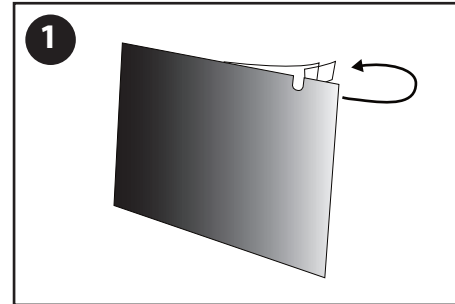
- Use the thumb notch to grab hold of the filter and slowly pull it towards you to remove from the display.
- For permanent removal or to replace attachment strips, use a fingernail to peel back the edge of a strip, then roll up the adhesive.

To Clean & Maintain

Remove the filter from the device before cleaning and moisten a soft, lint-free cloth with ammonia-free glass cleaner to wipe away fingerprints, smudges and dust. Clean attachment strips by running them under water and rubbing with your fingers. Let dry before reattaching again.

Reusable Attachment Strips Instruction

- Instrucciones de tiras de fijación reutilizables
- Bandes de fixation réutilisables
- Istruzioni per le strisce di fissaggio riutilizzabili
- Anleitung für wiederverwendbare Befestigungsstreifen
- Herbruikbare gehechtheidstrips Instructie
- Instruções de tiras de anexo reutilizáveis
- 再利用可能なアタッチメントストリップの指示
- 可重複使用的附件條帶指令
- 재사용 가능한 부착 스트립 지침



Limited Two Year Warranty

Rocstor warrants this product against defects in Material and workmanship for Two year. Rocstor will supply, at its option, comparable new and rebuilt replacements for defective parts and will pay the labor charges to repair the product found to be defective. The dated bill of sale as evidence of the original purchase price along with the defective product is required.

Technical Support

United States

1 818 727 7000

www.rocstor.com/filters

